

SONY

Hi-Fi Products
Service Bulletin

Sony Service Company - Technical Services
A Division of Sony Corporation of America
Sony Drive, Park Ridge, New Jersey 07656

Model: TA-AX285

No. 242

Subject: Tuner Bleeds Through To Other Inputs

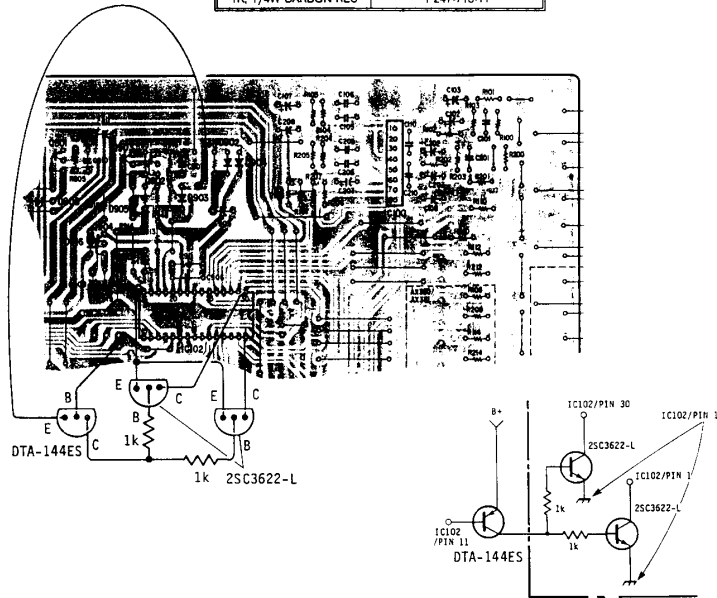
Date: January 27, 1992

Symptom:
(52)

The FM audio from the tuner bleeds through to other inputs. This is most noticeable when the audio signal from the selected source is not present or is between tracks. The following modification need only be done for those customers who find this condition unacceptable.

Solution: Implement the circuit modification as shown below:

DESCRIPTION	PART NUMBER
DTA-144ES	8-729-900-65
2SC3622-L	8-729-107-91
1K, 1/4W CARBON RES	1-247-713-11



Reference: FPR-N0009

PRINTED IN U.S.A.
CSA-13192-4

CSA-13 Integrated Amp.